

illustra triplePrep Kit

Rapid DNA, RNA, and protein isolation from undivided samples

The illustra™ triplePrep Kit is designed for rapid, simultaneous extraction and isolation of high quality genomic DNA (gDNA), total RNA, and total denatured proteins from animal tissues and mammalian cells. High yields of high quality DNA, RNA, and proteins can be extracted in less than 1 h using a flexible, easy-to-follow workflow allowing researchers to directly correlate data generated from the same sample.

The isolated gDNA, total RNA, and total denatured proteins are suitable for genomic and proteomic applications such as PCR, restriction enzyme digestion, sequencing, array CGH, RT-PCR, gene expression microarray, SDS-PAGE, Western blotting, 2-D DIGE, and LCMS.

illustra: Purify. Amplify. Simplify



illustra triplePrep Kit

Fast and simple

- From sample to DNA/RNA/protein in less than 1 h—streamlined workflow reduces the overall number of steps, resulting in up to 70% time saving compared to preparing each analyte individually.

High yield

- High DNA, RNA, and protein yields from small samples—optimized buffer, columns, and protocol ensure high recovery of gDNA, total RNA, and total denatured proteins.

High quality

- High purity—DNA-free RNA, with DNase provided in the kit.
- Suitable for downstream applications—gDNA, RNA, and proteins validated by numerous downstream applications.

Easy to use

- Flexible workflow—can isolate any two or all three analytes with multiple stop points in the protocol.
- User friendly—minimal change of centrifugation speed, time, and pipetting volume.
- Easy to follow—color-coded caps and bottles with matching protocol steps minimize the chance for error. A quick-reference protocol card provides instructions at a glance for experienced users.

Key facts

Typical yields and purities of gDNA, total RNA, and total denatured proteins from different tissues and cells are shown in the tables below.

Table 1. Typical yields and purities from different cells

	Cell	HeLa	NIH-3T3	CHO-K1	HEK-293
	Cell input amount (million)	1	1	1	1
DNA	Yield (µg)	8.5	9.5	4.4	9.1
	Purity (A_{260}/A_{280})	1.9	1.9	1.9	1.9
RNA	Yield (µg)	13.7	7.9	6.6	10.1
	Purity (A_{260}/A_{280})	2.1	2.1	2.0	2.0
Protein	Yield (µg)	139	127	77	139

Table 2. Typical yields and purities from different tissues

	Tissue	Liver	Brain	Heart	Kidney	Lung	Spleen
	Tissue input amount (mg)	10	10	10	10	10	5
	Disruption difficulty	Easy	Easy	Hard	Medium	Medium	Medium
	Need extra spin	No	No	No	No	Yes	No
DNA	Yield (µg)	14.6	6.8	7.4	22.4	15.5	18.8
	Purity (A_{260}/A_{280})	1.9	1.8	1.9	1.9	1.8	1.8
RNA	Yield (µg)	44	5.5	4.0	8.1	8.8	18.9
	Purity (A_{260}/A_{280})	2.1	2.0	2.0	2.1	2.0	2.1
	Need DNase	Yes	No	No	Yes	Yes	Yes
Protein	Yield (µg)	1460	746	923	897	592	510

Note: Yields and purities of gDNA, total RNA, and total denatured proteins can vary with user and depend on the nature and condition of the input sample.

Faster

The illustra triplePrep workflow is faster compared to three single preparations

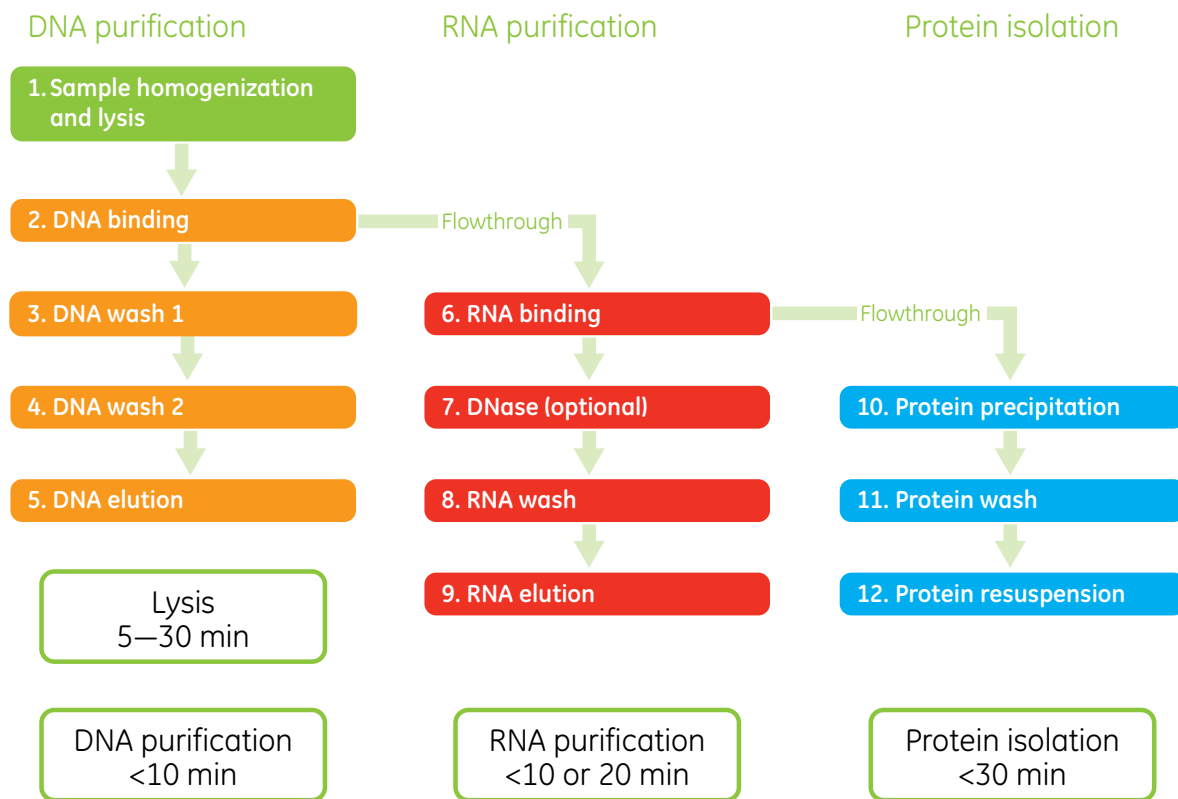


Fig 1. Procedure without lysis step: 45 to 55 min, procedure with lysis step: 50 to 85 min.

Higher yield*

DNA yield: illustra triplePrep vs Qiagen DNeasy™

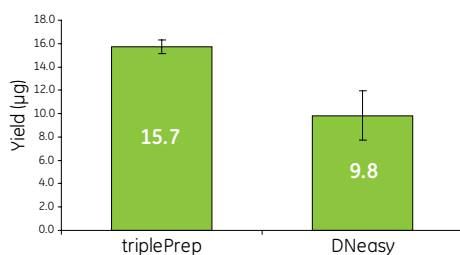


Fig 2. 60% more DNA was isolated using the illustra triplePrep Kit than with the Qiagen DNeasy kit per 10 mg rat liver input. (n = 4).

RNA yield: illustra triplePrep vs Qiagen RNeasy™

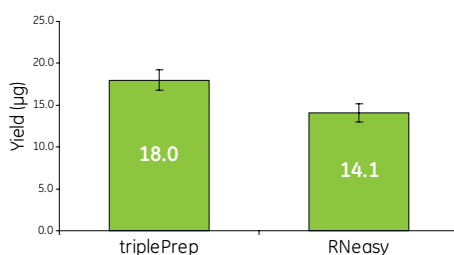


Fig 3. 30% more RNA was isolated using the illustra triplePrep Kit than with the Qiagen RNeasy kit per 1×10^6 HeLa cells input. (n = 6).

Protein yield: illustra triplePrep vs 2-D DIGE reference method

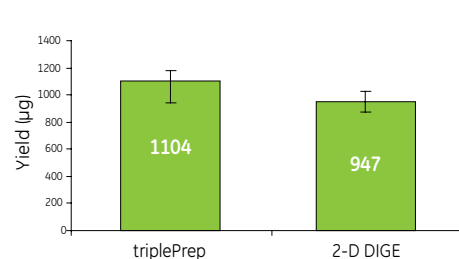


Fig 4. More than 1 mg of protein was isolated from 10 mg of rat liver using the illustra triplePrep Kit. (n = 6).

* Comparative analysis based on following manufacturers' recommended protocols.

High quality

Array CGH CyTM5 signal intensity scatter plot: illustra triplePrep vs DNeasy kit

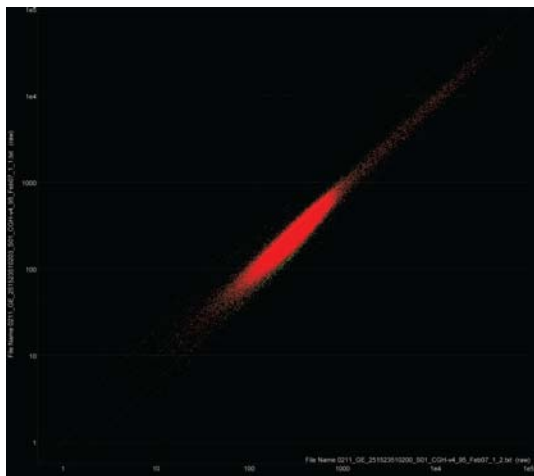


Fig 5. Scatter plot of aCGH data generated using the illustra triplePrep Kit (x axis) and Qiagen DNeasy kit (y axis). All 101080 aCGH probes contained on the AgilentTM rat whole genome aCGH array have been plotted. 99.4% of all probes are within the two-fold range and are displayed in red.

Gene expression microarray scatter plot: illustra triplePrep vs RNeasy kit

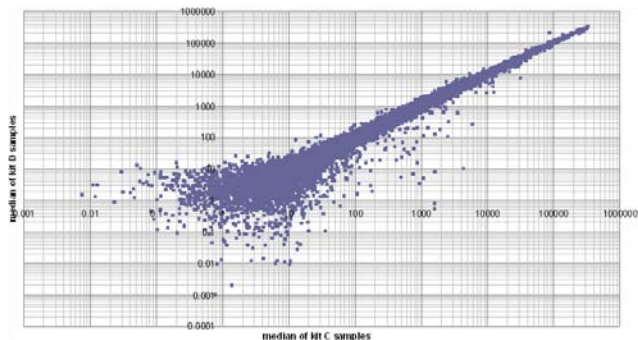


Fig 6. Scatter plot in log scale of the median signal intensities obtained using the illustra triplePrep Kit (y axis) and RNeasy kit (x axis). Pearson correlation coefficients between the two kits are 0.97 on average. Results are based on commercially available Agilent catalog 44 k rat whole genome gene expression arrays processed following the Agilent single-color protocol.

For local office contact information, visit
www.gelifesciences.com/contact

GE Healthcare Bio-Sciences AB
Björkgatan 30
751 84 Uppsala
Sweden

www.gelifesciences.com/illustra



imagination at work

2-D DIGE Image: illustra triplePrep vs 2-D DIGE reference method

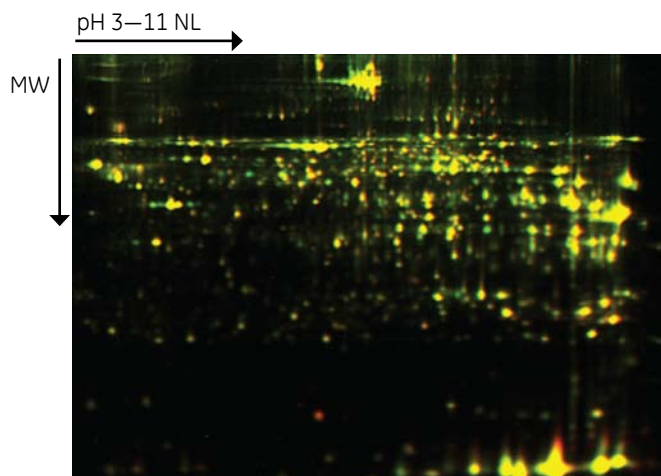


Fig 7. Overlaid gel image (yellow) from 2-D DIGE study of illustra triplePrep (green) and reference sample (red). As seen, more spots are detected by the illustra triplePrep method.

Ordering Information

Product	Quantity	Code
illustra triplePrep Kit	50 preps	28-9425-44

GE, imagination at work, and GE monogram are trademarks of General Electric Company. Illustra and Cy are trademarks of GE Healthcare Companies. DNeasy and RNeasy are trademarks of the Qiagen group. Agilent is a trademark of Agilent Technologies Inc.

CyDye: This product or portions thereof is manufactured under exclusive license from Carnegie Mellon University under US patent number 5,268,486 and equivalent patents in the US and other countries.

The purchase of CyDye products includes a limited license to use the CyDye products for internal research and development but not for any commercial purposes. A license to use the CyDye products for commercial purposes is subject to a separate license agreement with GE Healthcare. Commercial use shall include:

1. Sale, lease, license or other transfer of the material or any material derived or produced from it.
2. Sale, lease, license or other grant of rights to use this material or any material derived or produced from it.
3. Use of this material to perform services for a fee for third parties, including contract research and drug screening.

If you require a commercial license to use this material and do not have one, return this material unopened to GE Healthcare Bio-Sciences AB, Björkgatan 30, SE-751 84 Uppsala, Sweden and any money paid for the material will be refunded.

© 2008 General Electric Company—All rights reserved.

First published Dec. 2008

All goods and services are sold subject to the terms and conditions of sale of the company within GE Healthcare which supplies them. A copy of these terms and conditions is available on request. Contact your local GE Healthcare representative for the most current information.

GE Healthcare UK Ltd, Amersham Place, Little Chalfont, Buckinghamshire, HP7 9NA, UK
GE Healthcare Bio-Sciences Corp., 800 Centennial Avenue, P.O. Box 1327, Piscataway, NJ 08855-1327, USA
GE Healthcare Europe GmbH, Munzinger Strasse 5, D-79111 Freiburg, Germany
GE Healthcare Bio-Sciences KK, Sanken Bldg. 3-25-1, Hyakunincho, Shinjuku-ku, Tokyo 169-0073, Japan

28-9481-99 AA 12/2008